



**Australian  
Bureau of  
Statistics**

# **MONTHLY SUMMARY OF STATISTICS WESTERN AUSTRALIA**

TABLE	PAGE
<b>POPULATION</b>	
1.1	Estimated Resident Population 1
1.2	Components of Population Change 2
1.3	Registration of Births, Deaths, Marriages and Divorces 3
1.4	Rates of Births, Deaths, Marriages and Divorces 3
<b>TOURISM</b>	
2.1	Permanent and Long Term Arrivals and Departures 4
2.2	Short Term Overseas Arrivals and Departures 5
2.3	Short Term Overseas Arrivals by Air: Last Six Months 5
2.4	Short Term Overseas Arrivals: Purpose of Journey 6
2.5	Short Term Overseas Departures: Last Six Quarters 7
2.6	Short Term Overseas Departures: Purpose of Journey 8
2.7	Tourist Accommodation 9
<b>EMPLOYMENT</b>	
3.1	Labour Force Status: Seasonally Adjusted 10
3.2	Labour Force Status: Trends 11
3.3	Employed Wage and Salary Earners by Industry and Sector 12
3.4	Average Weekly Earnings of Employees 14
3.5	Industrial Disputes Causing Stoppage of Work 15
<b>RETAIL</b>	
4.1	Monthly Retail Turnover: Original Estimates 16
4.2	Consumer Price Index: Perth 17
<b>CONSTRUCTION</b>	
5.1	New Residential Building Approved 18
5.2	New Non-Residential Building Approved 19
5.3	Selected Housing Price Indexes: Perth 20
5.4	Price Indexes of Materials Used in Building Other Than House Building: Perth 21
<b>PRODUCTION</b>	
6.1	Livestock Slaughtered 22
6.2	Meat Produced 23
6.3	Wool Receivals and Live Sheep Exports 24
6.4	Energy Production 24
6.5	Production of Selected Commodities 25
6.6	Mineral Exploration: Expenditure by Type of Mineral Sought 26
6.7	Mineral Production 26
<b>OVERSEAS TRADE</b>	
7.1	Imports by Selected Divisions 27
7.2	Exports by Selected Divisions 28
<b>TRANSPORT</b>	
8.1	Vehicle Registration Statistics 29
8.2	New Motor Vehicle Registrations 29
<b>FINANCE</b>	
9.1	Private New Capital Expenditure by Selected Industry Groups 30
9.2	State Final Demand and Production Account 31
<b>STATISTICAL SUMMARY</b>	
10.1	Key State Indicators 32

## **INQUIRIES**

### **PHONE**

For more information about these statistics and of related unpublished statistics, contact Information Services on (09) 360 5140

### **MAIL**

Write to or visit Information Services, Bureau of Statistics, Level 16, Exchange Plaza Building 2 The Esplanade Perth WA 6000

### **ELECTRONIC**

On Elderlink key \*620#  
On Dial-A-Statistic phone (06) 252 6017

**AUSTRALIAN BUREAU OF STATISTICS  
WESTERN AUSTRALIA  
APRIL 1994 RELEASES**

<i>Catalogue Number</i>	<i>Publication Title</i>	<i>Release Date</i>
8741.5	Dwelling Unit Commencements, Western Australia, January 1995	4 April 1995
1313.5	Statslink, Western Australia, Issue 38	4 April 1995
3203.5	Estimated Resident Population, Age and Sex in Statistical Local Areas, Western Australia, 1993	7 April 1995
1305.5	Monthly Summary of Statistics, Western Australia, April 1995	28 April 1995

**Symbols and other usages**

The following symbols, where shown in columns of figures or elsewhere in tables, mean:

- n.a. not available
- n.e.i. not elsewhere included
- n.p. not available for separate publication (but included in totals where applicable)
- n.y.a. not yet available
- nil or rounded to zero
- .. not applicable
- p preliminary - figure or series subject to revision
- r figure or series revised since previous issue
- \_\_\_\_\_ break in continuity of series (where drawn between two consecutive figures or columns)

**Rounding Figures**

Where figures have been rounded, discrepancies may occur between sums of the component items and totals.

## Analysis of Table 1.1

The mean population for 1993-1994 increased by 21,300 over 1992-1993, 7% more than the 19,900 increase between 1991-1992 and 1992-1993.

The mean population for the 1993 calendar year increased by 19,100 on 1992. The increase was less than the 1992 increase of 21,300 over 1991.

In the June quarter 1994, Western Australia's population grew by 6,300 persons to 1,701,900. The increase was less than the March quarter 1994, but more than all quarters in 1993.

**TABLE 1.1 ESTIMATED RESIDENT POPULATION**  
Reference: Australian Demographic Statistics (3101.0)  
(<sup>'000</sup>)

Period	AT END OF PERIOD.....			Mean Population
	Males	Females	Persons (a)	
<b>Financial years</b>				
1991-92	833.2	824.2	1 657.4	1 647.5
1992-93	842.4	833.9	1 676.3	1 667.4
1993-94 p	855.0	846.9	1 701.9	1 688.7
<b>Calendar years</b>				
1991	827.9	818.9	1 646.9	1 636.6
1992	837.7	829.1	1 666.7	1 657.9
1993 p	847.6	839.6	1 687.3	1 677.0
<b>Quarters</b>				
Mar 93	840.3	831.9	1 672.2	..
Jun 93	842.4	833.9	1 676.3	..
Sep 93 p	845.3	836.9	1 682.2	..
Dec 93 p	847.6	839.6	1 687.3	..
Mar 94 p	851.9	843.8	1 695.6	..
Jun 94 p	855.0	846.9	1 701.9	..

(a) All estimates have been finalised using 1991 Census results

### Analysis of Table 1.2

In the June 1994 quarter, increases were recorded for each population component. The total increase was down on the total increase for March 1994 quarter, with the largest contributor to the decrease being net estimated overseas migration, down 2,500.

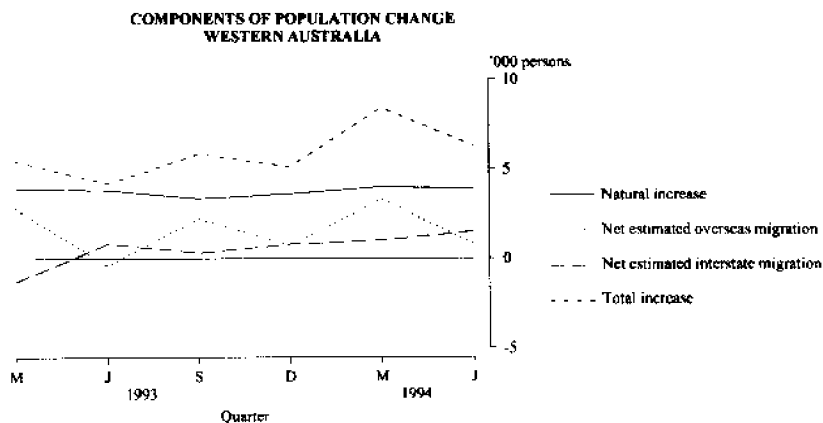
Net estimated interstate migration, which increased by 500, recorded the only increase from the March quarter. This continues the increase over the previous three quarters and is the fifth consecutive positive quarter.

### TABLE 1.2 COMPONENTS OF POPULATION CHANGE

Reference: Australian Demographic Statistics (3101.0)  
('000)

Period	Natural increase	Net estimated overseas migration (a)	Net estimated interstate migration	Total increase
<b>Financial years</b>				
1991-92	15.1	7.7	-1.4	21.3
1992-93	14.7	4.6	-0.3	19.0
1993-94 p	14.8	7.1	3.7	25.5
<b>Calendar years</b>				
1991	15.8	9.8	-1.9	22.6
1992	14.7	5.9	-0.9	19.6
1993 p	14.8	5.4	0.6	20.8
<b>Quarters</b>				
Mar 93	3.9	2.8	-1.3	5.4
Jun 93	3.8	-0.4	0.8	4.2
Sep 93 p	3.3	2.2	0.3	5.8
Dec 93 p	3.6	0.7	0.8	5.1
Mar 94 p	4.0	3.3	1.0	8.4
June 94 p	3.9	0.8	1.5	6.3

(a) Includes category jumping



### Analysis of Table 1.3

The number of divorces registered in the 1993-1994 financial year increased by 549 over the previous financial year. Over the same time period, the number of marriages registered remained relatively unchanged. September quarter 1994 divorces rose slightly by 50 from June quarter.

For September quarter 1994 there was a large decrease of 1,024 marriages and 192 births from June quarter 1994. The number of deaths increased by 294 over the same period. These figures illustrate a trend for more people to die and less people to marry during the winter months.

Infant deaths remained unchanged from June quarter 1994.

**TABLE 1.3 REGISTRATION OF BIRTHS, DEATHS, MARRIAGES AND DIVORCES**

Reference: Australian Demographic Statistics (3101.0)

Period	Live births	Infant deaths	Total deaths	Marriages	Divorces
<b>Financial years</b>					
1991-92	24 820	177	9 624	10 241	4 575
1992-93	25 081	146	9 994	10 215	4 385
1993-94 p	25 299	148	10 523	10 316	4 934
<b>Calendar years</b>					
1991	25 349	182	9 538	10 659	4 446
1992	25 051	171	9 902	10 118	4 540
1993	25 079	143	10 318	10 382	4 654
<b>Quarters</b>					
Jun 93	6 372	33	2 455	2 462	1 187
Sep 93	6 296	38	2 976	1 454	1 241
Dec 93	6 146	40	2 600	3 263	1 360
Mar 94 p	6 408	31	2 428	3 113	1 050
Jun 94 p	6 449	39	2 519	2 486	1 283
Sep 94 p	6 257	39	2 813	1 462	1 333

### Analysis of Table 1.4

Rates for live births and marriages dropped in September quarter 1994, matching the decline of numbers from June quarter 1994. For live births, the rate fell from 15.18 to 14.67, following a similar occurrence in 1993. For marriages the rate declined from 5.85 in June quarter to 3.43, matching a similar decline in 1993 when the rate fell from 5.88 to 3.46.

The rate for total deaths increased from 5.93 to 6.60 in September quarter 1994 which followed a similar occurrence in 1993. There was a slight rise in the divorce rate from 3.02 to 3.13 and in the infant death rate for September quarter 1994.

For more information about these tables, contact Audrey Cooke on (09) 360 5389

**TABLE 1.4 RATES OF BIRTHS, DEATHS, MARRIAGES AND DIVORCES**

Reference: Australian Demographic Statistics (3101.0)

Period	Live births (a)	Infant deaths (b)	Total deaths (a)	Marriages (a)	Divorces (a)
<b>Financial years</b>					
1991-92	15.06	7.13	5.84	6.22	2.50
1992-93	15.04	5.82	5.99	6.12	2.78
1993-94 p	14.98	5.85	6.23	6.10	2.92
<b>Calendar years</b>					
1991	15.47	7.11	5.75	6.51	2.72
1992	15.11	6.75	6.03	6.12	2.74
1993	14.95	5.70	6.15	6.19	2.78
<b>Quarters</b>					
Jun 93	15.21	5.18	5.86	5.88	2.83
Sep 93	14.98	6.04	7.08	3.46	2.95
Dec 93	14.59	6.51	6.17	7.75	3.22
Mar 94 p	15.15	4.84	5.74	7.36	2.48
Jun 94 p	15.18	6.05	5.93	5.85	3.02
Sep 94 p	14.67	6.23	6.60	3.43	3.13

(a) For financial and calendar years the rate is per '000 mean resident population. For quarters, the mean is averaged between the previous and current quarterly population. (b) Infant deaths per 1,000 live births

## Analysis of Table 2.1

In the September quarter 1994 there were 6,610 long term arrivals, an increase of 24% compared with the September quarter 1993. There were approximately half as many long term departures (3,430) as arrivals. Long term departures increased 4% compared with the same time last year.

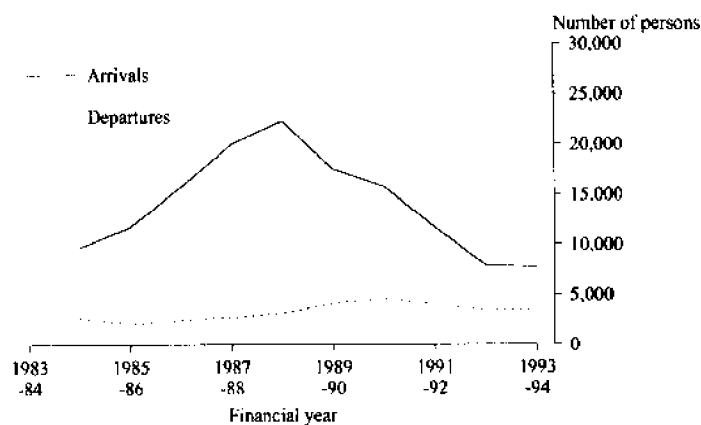
There were 2,410 permanent settler arrivals to Western Australia in the September quarter 1994. This is an increase of 670 arrivals or 38% compared with the same quarter last year. This follows on a 29% increase for June quarter 1994 compared with June quarter 1993.

The number of long term overseas visitor arrivals (visitors who intend to stay for longer than 12 months) for September quarter 1994 increased by 410 arrivals or 25% compared with the same quarter last year.

TABLE 2.1 PERMANENT AND LONG TERM ARRIVALS AND DEPARTURES

Reference: Unpublished table PMTR0001

Period	Permanent movement	LONG TERM MOVEMENT		
		Australian residents	Overseas visitors	Total movement
<b>ARRIVALS</b>				
<b>Financial years</b>				
1991-92	11 710	7 520	5 850	25 090
1992-93	7 930	8 260	6 090	22 280
1993-94	7 740	8 900	7 430	24 070
<b>Quarters</b>				
Jun 93	1 700	1 710	850	4 260
Sep 93	1 740	1 930	1 670	5 340
Dec 93	1 900	2 930	1 060	5 890
Mar 94	1 920	2 340	3 550	7 810
Jun 94	2 190	1 700	1 150	5 040
Sep 94	2 410	2 120	2 080	6 610
<b>DEPARTURES</b>				
<b>Financial years</b>				
1991-92	3 980	7 670	3 780	15 430
1992-93	3 410	7 180	3 680	14 260
1993-94	3 430	7 340	4 140	14 900
<b>Quarters</b>				
Jun 93	860	1 600	680	3 150
Sep 93	840	1 660	790	3 290
Dec 93	880	1 590	1 550	4 030
Mar 94	920	2 210	960	4 090
Jun 94	780	1 880	840	3 490
Sep 94	800	1 750	880	3 430

PERMANENT SETTLER ARRIVALS AND PERMANENT DEPARTURES  
1984 - 1994

### Analysis of Table 2.2

Short term overseas visitor arrivals for September quarter 1994 increased 25% compared with the same quarter last year. This follows on an 18% increase for June quarter 1994 compared with June quarter 1993.

The number of Australian residents departing on short term overseas journeys in the 1994 September quarter increased 11% (compared with September quarter 1993) to 84,200.

### TABLE 2.2 SHORT TERM OVERSEAS ARRIVALS AND DEPARTURES

Reference: Unpublished table PMTR0001

Period	Australian residents	Overseas visitors	Total
ARRIVALS			
<b>Financial years</b>			
1991-92	234 000	194 400	428 400
1992-93	261 600	234 000	495 600
1993-94	269 900	297 700	567 600
<b>Quarters</b>			
Jun 93	54 800	55 600	110 400
Sep 93	73 700	58 900	132 500
Dec 93	64 800	89 600	154 400
Mar 94	72 400	83 500	155 900
Jun 94	59 100	65 800	124 800
Sep 94	82 300	73 600	155 900
DEPARTURES			
<b>Financial years</b>			
1991-92	248 600	199 400	448 000
1992-93	269 800	232 500	502 300
1993-94	274 800	290 500	565 300
<b>Quarters</b>			
Jun 93	65 900	62 200	128 100
Sep 93	76 000	51 000	127 000
Dec 93	72 600	75 300	147 900
Mar 94	56 400	87 400	143 800
Jun 94	69 800	76 900	146 600
Sep 94	84 200	71 600	155 800

### Analysis of Table 2.3

Short term overseas arrivals by air for September quarter 1994 (73,500) were up by 14,800 arrivals or 25% compared with September quarter 1993. The largest increase was in Indonesian arrivals whose numbers more than doubled, increasing from 4,100 for the September quarter 1993 to 8,900 for the September quarter 1994. For the same period the number of Japanese arrivals decreased from 8,600 to 8,400.

The major source countries were Singapore (15% of total), the United Kingdom and Ireland (14%), Indonesia (12%) and Japan (11%).

### TABLE 2.3 SHORT TERM OVERSEAS ARRIVALS BY AIR (a): LAST SIX QUARTERS

Reference: Unpublished table PMTR0031  
('000)

Country of residence	Jun 1993	Sep 1993	Dec 1993	Mar 1994	Jun 1994	Sep 1994
('000)						
<b>Asia</b>						
Indonesia	3.7	4.1	7.8	8.6	7.4	8.9
Japan	4.8	8.6	5.6	8.0	5.2	8.4
Malaysia	5.7	5.5	7.2	6.7	7.0	6.9
Singapore	11.8	7.4	17.5	11.3	14.5	10.9
Thailand	3.1	1.3	3.1	2.7	3.3	2.5
Total Asia (b)	31.7	30.6	45.0	41.8	41.0	42.1
<b>Other</b>						
Germany	1.4	1.6	3.5	3.4	1.6	2.3
New Zealand	5.9	8.1	6.3	4.8	5.8	7.5
U.K. and Ireland	8.8	8.8	19.0	19.8	9.7	10.0
U.S.A.	2.4	1.9	2.7	3.0	1.9	2.4
Other	5.2	7.7	12.7	10.6	5.6	9.2
Total Other	23.7	28.1	44.2	41.6	24.6	31.4
<b>Total</b>	<b>55.4</b>	<b>58.7</b>	<b>89.2</b>	<b>83.4</b>	<b>65.7</b>	<b>73.5</b>

(a) Comprises travellers whose intended or actual stay is less than twelve months. (b) Includes countries not mentioned.

### Analysis of Table 2.4

September 1994 marked the introduction of new passenger cards and this represents a break in statistical series for overseas arrival and departure statistics classified by *purpose of journey*.

In the September quarter 1994 there were 73,500 short term overseas arrivals by air. Some 43,300 arrivals or 59%, gave the reason for their journey as holiday, and a further 15,200 arrivals or 21% said they were visiting friends or relatives.

The leading source countries for short term arrivals on holiday were Singapore (18% of total), Japan (17%) and Indonesia (15%).

For short term arrivals visiting friends or relatives the leading source countries were the United Kingdom and Ireland (31% of total) and New Zealand (19%).

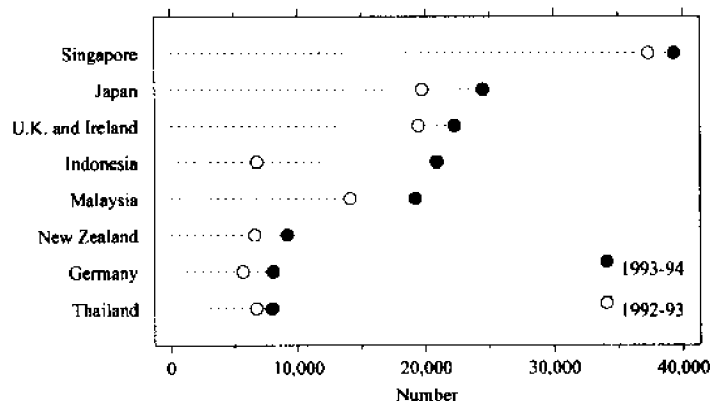
**TABLE 2.4 SHORT TERM OVERSEAS ARRIVALS BY AIR : PURPOSE OF JOURNEY: SEPTEMBER QUARTER 1994**

Reference: Unpublished table PMTR0031 ('000)

Country of residence	Convention / business (a)	Visiting friends / relatives	Holiday	Employment and education	Other and not stated	Total this quarter
<b>Asia</b>						
Indonesia	0.5	0.5	6.5	1.0	0.3	8.9
Japan	0.6	0.2	7.2	0.2	0.2	8.4
Malaysia	1.0	0.9	4.2	0.6	0.1	6.9
Singapore	0.7	1.3	7.7	1.0	0.3	10.9
Thailand	0.1	0.2	2.0	0.1	—	2.5
<b>Total Asia (b)</b>	<b>3.9</b>	<b>4.3</b>	<b>29.3</b>	<b>3.3</b>	<b>1.3</b>	<b>42.1</b>
<b>Other</b>						
Germany	0.1	0.4	1.7	0.1	0.1	2.3
New Zealand	0.8	3.0	2.8	0.3	0.7	7.5
U.K. and Ireland	1.4	4.7	3.6	0.1	0.1	10.0
U.S.A.	0.7	0.9	0.6	0.2	0.1	2.4
Other	1.1	2.0	5.2	0.5	0.4	9.2
<b>Total Other</b>	<b>4.1</b>	<b>10.9</b>	<b>14.0</b>	<b>1.1</b>	<b>1.3</b>	<b>31.4</b>
<b>Total</b>	<b>8.0</b>	<b>15.2</b>	<b>43.3</b>	<b>4.4</b>	<b>2.6</b>	<b>73.5</b>

(a) From September 1994 includes convention, conference and business. (b) Includes countries not mentioned.

**SHORT TERM OVERSEAS ARRIVALS BY AIR:  
PURPOSE OF JOURNEY: HOLIDAY  
1992-93, 1993-94**





### Analysis of Table 2.5

In the September quarter 1994 there were 84,100 short term resident departures by air, an increase of 8,200 departures or 11% on the same quarter last year.

Indonesia was the destination of 25% of departing residents in the September quarter. Other destinations were the United Kingdom and Ireland (16%) and Malaysia and New Zealand each with 8%.

**TABLE 2.5 SHORT TERM OVERSEAS RESIDENT DEPARTURES BY AIR  
LAST SIX QUARTERS**

Reference: Unpublished table PMTR0031  
('000)

<i>Country departing to</i>	<i>Jun 1993</i>	<i>Sep 1993</i>	<i>Dec 1993</i>	<i>Mar 1994</i>	<i>Jun 1994</i>	<i>Sep 1994</i>
<b>Asia</b>						
Hong Kong	2.6	3.2	2.9	2.2	2.6	3.1
Indonesia (a)	14.5	19.5	16.7	14.0	14.4	21.0
Japan	0.7	1.4	1.0	0.7	0.9	0.9
Malaysia	4.9	6.2	6.0	5.7	5.4	6.5
Singapore	7.6	5.6	7.8	5.2	5.6	7.7
Thailand	3.5	4.7	3.5	2.5	3.9	4.7
<i>Total Asia (b)</i>	<i>36.8</i>	<i>43.6</i>	<i>43.2</i>	<i>35.2</i>	<i>36.5</i>	<i>47.8</i>
<b>Other</b>						
Germany	1.1	0.8	0.5	0.3	0.9	0.8
Italy	1.6	1.9	0.7	0.7	1.4	1.5
New Zealand	3.3	5.1	7.7	5.4	3.8	6.5
U.K. and Ireland	10.9	11.3	8.4	6.2	12.7	13.3
U.S.A.	3.8	4.8	4.3	2.6	5.0	4.9
Other	8.2	8.4	7.7	5.8	9.4	9.2
<i>Total Other</i>	<i>28.9</i>	<i>32.3</i>	<i>29.3</i>	<i>21.0</i>	<i>33.2</i>	<i>36.3</i>
<b>Total</b>	<b>65.7</b>	<b>75.9</b>	<b>72.5</b>	<b>56.2</b>	<b>69.7</b>	<b>84.1</b>

(a) Includes Bali. (b) Includes countries not mentioned.

### Analysis of Table 2.6

Of the 84,100 short term resident departures by air in September quarter 1994, 61% were going on holiday, 17% were visiting friends relatives and 15% were going to a convention/conference or to do business.

For residents departing on holiday the most popular destinations were Indonesia (35% of total), and the United Kingdom and Ireland (13%).

Of those residents departing to visit friends/relatives overseas, 34% went to the United Kingdom or Ireland, and a further 13% went to New Zealand.

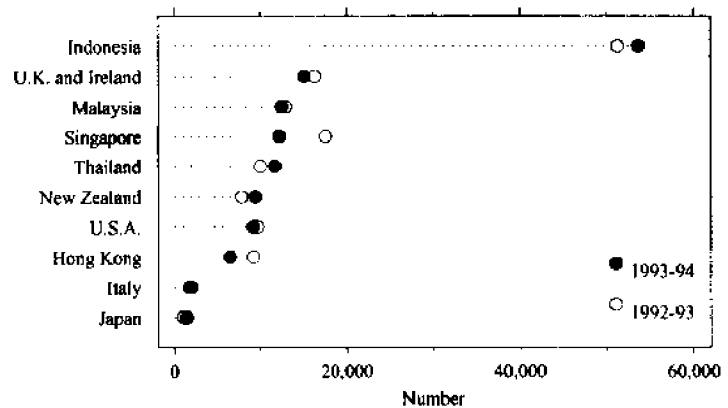
**TABLE 2.6 SHORT TERM OVERSEAS RESIDENT DEPARTURES BY AIR: PURPOSE OF JOURNEY: SEPTEMBER QUARTER 1994**

Reference: Unpublished table PMTR0031 ('000)

Country of residence	Convention /business (a)	Visiting friends/relatives	Holiday	Employment and education	Other and not stated	Total this quarter
<b>Asia</b>						
Hong Kong	0.6	0.4	1.8	0.2	0.1	3.1
Indonesia	1.5	0.5	18.1	0.2	0.7	21.0
Japan	0.2	0.1	0.3	0.2	0.1	0.9
Malaysia	1.4	0.8	3.8	0.3	0.3	6.5
Singapore	2.1	0.9	4.2	0.3	0.3	7.7
Thailand	0.3	0.1	4.1	0.1	0.1	4.7
<b>Total Asia (b)</b>	<b>7.3</b>	<b>3.7</b>	<b>33.4</b>	<b>1.7</b>	<b>1.9</b>	<b>47.8</b>
<b>Other</b>						
Germany	0.2	0.3	0.4	-	-	0.8
Italy	0.2	0.5	0.7	-	-	1.5
New Zealand	0.7	1.9	3.7	0.1	0.2	6.5
U.K. and Ireland	1.0	4.8	6.6	0.3	0.6	13.3
U.S.A.	1.2	0.5	2.9	0.2	0.1	4.9
Other	1.8	2.5	3.9	0.6	0.5	9.2
<b>Total Other</b>	<b>5.0</b>	<b>10.5</b>	<b>18.1</b>	<b>1.2</b>	<b>1.4</b>	<b>36.3</b>
<b>Total</b>	<b>12.3</b>	<b>14.2</b>	<b>51.5</b>	<b>2.9</b>	<b>3.3</b>	<b>84.1</b>

(a) From September 1994 includes convention, conference and business. (b) Includes countries not mentioned.

**SHORT TERM OVERSEAS RESIDENT DEPARTURES BY AIR: PURPOSE OF JOURNEY: HOLIDAY 1992-93, 1993-94**



**Analysis of Table 2.7**

Whilst the availability of all types of tourist accommodation in Western Australia has increased steadily over the last few years, there has been substantial growth in the numbers of Holiday Flats, Units and Houses available for letting. This is well indicated by increases of 5.1% in 1991-92 and 5.2% in 1992-93. The Tourism Industry has continued to meet this demand for self catering, self contained accommodation in 1993-94 resulting in an increase of 11.6% to 2,224 units as at 30 June 1994.

For more information about this table, contact Diane Braskic on (09) 360 5932

**TABLE 2.7 TOURIST ACCOMMODATION**  
Reference: Tourist Accommodation, Western Australia (8635.5)

Period	HOTELS, MOTELS, GUEST HOUSES WITH FACILITIES.....			CARAVAN PARKS		
	Guest rooms	Room occu- pancy rates	Guest arrivals	Number of sites	Site occu- pancy rates	Guest arrivals
	Number	per cent	'000	Number	per cent	'000
<b>Financial years</b>						
1991-92	14 624 (a)	52	1	28 174	32	1 260
1992-93	14 577 (a)	53	1	28 308	38	1 194
1993-94	14 754 (a)	57	2	29 202	39	1 250
<b>Months</b>						
Oct 93		64	211		39	105
Nov 93		57	171		34	63
Dec 93	14 694	52	182	28 592	37	92
Jan 94		52	183		45	142
Feb 94		57	152		36	75
Mar 94	14 720	59	182	28 817	36	99
Apr 94		57	180		41	127
May 94		53	159		36	82
Jun 94	14 754	54	164	29 202	38	92
Jul 94		57	189		45	131
Aug 94		59	193		45	127
Sept 94	14 733	65	211	29 353	42	117
Oct 94		68	218		39	107
Nov 94		62	180		35	68
Dec 94	14 734	54	182	29 625	37	100
Period	HOLIDAY FLATS, UNITS, HOUSES .....			VISITOR HOSTELS.....		
	Guest Units	Unit occu- pancy rates	Unit lettings	Bed Spaces	Bed occu- pancy rates	Bed- nights sold
	Number	per cent	'000	Number	per cent	'000
<b>Financial years</b>						
1991-92	1 895 (a)	53	91	2 683 (a)	34	323
1992-93	1 993 (a)	52	86	3 112 (a)	36	386
1993-94	2 224 (a)	55	96	3 119 (a)	38	416
<b>Months</b>						
Oct 93		61	10		38	35
Nov 93		51	8		37	33
Dec 93	2 190	56	8	2 993	39	36
Jan 94		74	9		42	40
Feb 94		58	7		42	36
Mar 94	2 198	56	9	2 792	42	39
Apr 94		64	9		40	37
May 94		43	7		34	32
Jun 94	2 224	47	7	3 119	34	32
Jul 94		58	9		38	36
Aug 94		50	8		34	32
Sept 94	2 255	58	10	3 042	38	34
Oct 94		66	10		39	34
Nov 94		55	9		41	35
Dec 94	2 302	60	10	2 858	42	37

(a) Number at 30 June.

**TABLE 3.1 LABOUR FORCE STATUS (AGED 15 YEARS AND OVER):  
SEASONALLY ADJUSTED SERIES**

Reference: The Labour Force, Australia (6202.0)

Month	Employed full-time '000	Total employed '000	Total unemployed '000	Unemploy- ment rate %	Participation rate %
<b>Males</b>					
Jun 94	411.2	458.3	42.5	8.5	76.6
Jul 94	416.0	463.8	41.8	8.3	77.2
Aug 94	416.2	462.6	40.5	8.0	76.7
Sep 94	416.1	464.1	39.8	7.9	76.7
Oct 94	410.4	463.9	38.1	7.6	76.3
Nov 94	412.0	468.3	40.1	7.9	77.1
Dec 94	415.8	471.0	37.6	7.4	77.0
Jan 95	416.8	472.5	39.9	7.8	77.5
Feb 95	417.1	466.6	46.0	9.0	77.4
Mar 95	423.2	476.4	37.3	7.3	77.4
<b>Females</b>					
Jun 94	178.2	327.3	33.8	9.4	54.7
Jul 94	180.0	336.9	29.2	8.0	55.4
Aug 94	180.2	335.3	28.3	7.8	54.9
Sep 94	180.8	333.4	31.0	8.5	55.0
Oct 94	184.3	341.4	27.8	7.5	55.6
Nov 94	186.2	340.2	28.4	7.7	55.4
Dec 94	185.5	345.7	26.3	7.1	55.8
Jan 95	183.2	344.4	26.4	7.1	55.6
Feb 95	192.1	349.2	26.0	6.9	56.1
Mar 95	188.3	350.3	26.9	7.1	56.3
<b>Persons</b>					
Jun 94	589.3	785.6	76.2	8.8	65.6
Jul 94	596.1	800.6	70.9	8.1	66.3
Aug 94	596.5	797.9	68.7	7.9	65.8
Sep 94	596.9	797.5	70.9	8.2	65.8
Oct 94	594.7	805.3	65.9	7.6	65.9
Nov 94	598.2	808.5	68.5	7.8	66.2
Dec 94	601.3	816.7	63.9	7.3	66.4
Jan 95	600.0	816.9	66.4	7.5	66.5
Feb 95	609.2	815.8	72.0	8.1	66.7
Mar 95	611.5	826.7	64.2	7.2	66.8

**TABLE 3.2 LABOUR FORCE STATUS (AGED 15 YEARS AND OVER):  
TREND SERIES**

Reference: The Labour Force, Australia (6202.0)

<i>Month</i>	<i>Employed full-time</i>	<i>Total employed</i>	<i>Total unemployed</i>	<i>Unemploy- ment rate</i>	<i>Participation rate</i>
	'000	'000	'000	%	%
<b>Males</b>					
Jun 94	413.4	460.8	41.4	8.2	76.8
July 94	413.9	461.5	41.0	8.2	76.8
Aug 94	414.1	462.8	40.3	8.0	76.7
Sep 94	414.1	464.4	39.7	7.9	76.7
Oct 94	414.1	466.1	39.3	7.8	76.8
Nov 94	414.2	467.7	39.4	7.8	76.9
Dec 94	414.7	468.9	39.9	7.8	77.1
Jan 95	415.3	469.8	40.8	8.0	77.2
Feb 95	416.1	470.5	41.9	8.2	77.3
Mar 95	419.9	473.1	40.8	7.9	77.4
<b>Females</b>					
Jun 94	178.6	330.0	30.9	8.6	54.7
Jul 94	179.6	332.1	30.6	8.4	54.9
Aug 94	180.8	334.6	30.0	8.2	55.1
Sep 94	182.0	337.0	29.2	8.0	55.3
Oct 94	183.2	339.3	28.4	7.7	55.4
Nov 94	184.6	341.6	27.7	7.5	55.5
Dec 94	185.9	343.8	27.1	7.3	55.7
Jan 95	187.1	345.7	26.5	7.1	55.8
Feb 95	188.3	347.7	26.0	7.0	55.9
Mar 95	188.9	349.9	26.0	6.9	56.1
<b>Persons</b>					
Jun 94	591.9	790.7	72.3	8.4	65.7
Jul 94	593.5	793.7	71.6	8.3	65.8
Aug 94	594.9	797.3	70.4	8.1	65.9
Sep 94	596.1	801.4	68.9	7.9	66.0
Oct 94	597.3	805.5	67.7	7.8	66.1
Nov 94	598.8	809.2	67.1	7.7	66.2
Dec 94	600.5	812.7	67.0	7.6	66.3
Jan 95	602.5	815.5	67.4	7.6	66.5
Feb 95	604.4	818.1	67.9	7.7	66.6
Mar 95	608.8	823.0	66.8	7.5	66.7

## Analysis of Table 3.3

The total number of employees fell from 573,700 in June 1993 to 536,200 in June 1994. During this twelve month period, the public sector total number of employees fell by 9,800 to 155,200, and the private sector total number of employees showed a decrease of 27,600 to 381,000.

**TABLE 3.3 NUMBER OF EMPLOYED WAGE AND SALARY EARNERS BY INDUSTRY AND SECTOR ('000)**

Reference: Employed Wage and Salary Earners (6248.0)

Particulars	NUMBER OF EMPLOYEES ('000).....				GROSS EARNINGS
	Jun 1993	Dec 1993	Mar 1994	Jun 1994	Jun quarter 1994
	Persons				\$m
<b>INDUSTRY</b>					
Mining	21.4	18.5	20.1	15.9	259.8
Manufacturing	61.1	63.7	57.9	53.1	415.2
Electricity, gas and water	9.1	8.9	8.7	8.6	88.9
Construction	35.5	35.3	28.2	32.3	250.1
Wholesale trade	40.7	41.6	40.4	36.3	258.2
Retail trade	77.6	75.1	79.0	80.2	340.4
Transport and storage	20.0	22.1	22.3	21.8	331.2
Communication	8.6	8.5	8.2	8.3	86.5
Finance, property and business	65.8	60.0	60.8	61.6	512.4
Public administration and defence	27.5	27.7	29.6	30.0	226.4
Community services	160.7	143.9	144.8	147.7	1 090.2
Recreation, personal and other services	44.1	44.0	48.4	38.9	180.2
<b>Total all industries (a)</b>	<b>573.7</b>	<b>551.0</b>	<b>549.8</b>	<b>536.2</b>	<b>4 052.9</b>
<b>SECTOR</b>					
Private	408.6	393.9	395.7	381.0	2 717.1
Government					
Commonwealth	23.8	22.8	22.0	22.0	221.3
State	128.9	121.6	118.8	119.7	1 036.6
Local	12.2	12.7	13.3	13.5	77.9
Total Government	165.0	157.1	154.1	155.2	1 335.7
<b>Total all sectors</b>	<b>573.7</b>	<b>551.0</b>	<b>549.8</b>	<b>536.2</b>	<b>4 052.9</b>

(a) Includes employees of government agencies classified to Agriculture, forestry, fishing and hunting.

**TABLE 3.3 NUMBER OF EMPLOYED WAGE AND SALARY EARNERS**  
**Reference: Employed Wage and Salary Earners (6248.0) *continued***

<i>Particulars</i>	MAY 1993.....			MAY 1994.....		
	Males	Females	Persons	Males	Females	Persons
<b>INDUSTRY</b>						
Mining	18.3	3.0	21.3	13.6	2.2	15.8
Manufacturing	46.9	14.7	61.6	40.5	13.0	53.5
Electricity, gas and water	8.3	0.9	9.2	7.7	0.9	8.7
Construction	30.8	4.3	35.2	26.5	5.8	32.3
Wholesale trade	29.2	11.1	40.3	24.2	12.4	36.6
Retail trade	37.8	40.8	78.6	33.7	46.4	80.1
Transport and storage	17.5	4.4	21.8	18.5	3.9	22.4
Communication	6.4	2.3	8.7	5.8	2.4	8.3
Finance, property and business	29.6	34.7	64.3	28.5	32.3	60.8
Public administration and defence	16.7	10.8	27.4	17.7	12.1	29.8
Community services	56.5	101.3	157.8	50.4	95.6	146.1
Recreation, personal and other services	19.3	25.0	44.3	16.2	22.8	39.1
<b>Total all industries (a)</b>	<b>316.8</b>	<b>253.7</b>	<b>570.5</b>	<b>284.0</b>	<b>250.7</b>	<b>534.7</b>
<b>SECTOR</b>						
Private	232.9	175.9	408.7	205.7	176.0	381.8
Government						
Commonwealth	14.4	9.6	24.0	13.7	8.4	22.1
State	61.6	63.8	125.4	56.4	61.2	117.6
Local	7.9	4.5	12.3	8.2	5.1	13.3
<b>Total Government</b>	<b>83.9</b>	<b>77.8</b>	<b>161.8</b>	<b>78.3</b>	<b>74.7</b>	<b>153.0</b>
<b>Total all sectors</b>	<b>316.8</b>	<b>253.7</b>	<b>570.5</b>	<b>284.0</b>	<b>250.7</b>	<b>534.7</b>

(a) Includes employees of government agencies classified to Agriculture, forestry, fishing and hunting.

## Analysis of Table 3.4

In the twelve months to August 1994, the movement in all earnings categories for full-time adult males and females ranged from -1.6 % to 3.4 %.

Western Australian average weekly total earnings for full-time adult persons in August 1994 were \$660.40, while the comparable Australian average earnings in August 1994 were \$661.30.

**TABLE 3.4 AVERAGE WEEKLY EARNINGS OF EMPLOYEES**  
Reference: *Average Weekly Earnings, States and Australia, (6302.0)*  
(dollars)

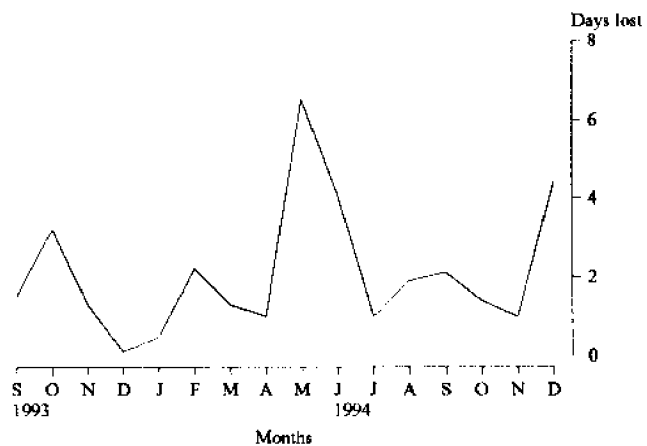
MALES .....			
FULL-TIME ADULTS.....			ALL
	Ordinary	Total	MALES
<i>Period</i>	<i>time</i>	<i>Total</i>	<i>Total</i>
	<i>earnings</i>	<i>earnings</i>	<i>earnings</i>
<b>Quarters</b>			
May 93	640.80	699.40	617.80
Aug 93	646.30	698.00	620.20
Nov 93	658.70	713.70	627.60
Feb 94	659.70	708.50	631.60
May 94	663.70	717.00	622.70
Aug 94	686.10	737.30	614.70
FEMALES .....			
FULL-TIME ADULTS.....			ALL
	Ordinary	Total	FEMALES
<i>Period</i>	<i>time</i>	<i>Total</i>	<i>Total</i>
	<i>earnings</i>	<i>earnings</i>	<i>earnings</i>
<b>Quarters</b>			
May 93	507.90	519.50	364.70
Aug 93	496.00	506.10	373.90
Nov 93	507.50	521.60	370.40
Feb 94	519.70	534.90	378.50
May 94	524.10	539.10	384.70
Aug 94	517.50	530.50	383.00
FULL-TIME ADULTS.....			
	Ordinary	Total	ALL
<i>Period</i>	<i>time</i>	<i>Total</i>	EMPLOYEES
	<i>earnings</i>	<i>earnings</i>	<i>Total</i>
			<i>earnings</i>
<b>Quarters</b>			
May 93	594.50	636.70	496.10
Aug 93	592.20	628.90	502.40
Nov 93	605.90	646.60	505.20
Feb 94	608.00	644.40	506.40
May 94	612.30	651.50	507.70
Aug 94	623.40	660.40	507.20



**TABLE 3.5 INDUSTRIAL DISPUTES CAUSING STOPPAGE OF WORK**  
**Reference: Industrial Disputes, Australia (6321.0)**

Period	Number of disputes	WORKERS INVOLVED.....		Total	Working days lost
		Directly	Indirectly		
	Number	'000	'000	'000	'000
<b>Calendar year</b>					
1992	134	28.6	0.2	28.8	53.6
1993	111	27.4	0.2	27.6	29.5
1994	82	15.7	0.2	15.9	27.4
<b>Months</b>					
Oct 93	19.0	3.2	—	3.2	3.2
Nov 93	5.0	0.6	—	0.6	1.3
Dec 93	4.0	0.2	—	0.2	0.1
Jan 94	7.0	0.5	—	0.5	0.5
Feb 94	8.0	1.5	—	1.5	2.2
Mar 94	8.0	0.8	—	0.8	1.3
Apr 94	7.0	2.0	—	2.0	1.0
May 94	8.0	2.3	—	2.3	6.5
Jun 94	5.0	0.3	—	0.3	4.1
Jul 94	5.0	0.6	—	0.6	1.0
Aug 94	6.0	1.2	—	1.2	1.9
Sep 94	6.0	1.0	—	1.0	2.1
Oct 94	7.0	1.7	—	1.7	1.4
Nov 94	8.0	1.8	—	1.8	1.0
Dec 94	10.0	2.4	0.1	2.5	4.4

**INDUSTRIAL DISPUTES**  
**Working Days Lost**



## Analysis of Table 4.1

The data in this table have been revised and now show data from the redesigned Retail Business Survey. See Information Paper (8511.0) issued on 1 December 1994 or Retail Trade Australia (8501.1) for more detail on the survey redesign.

Estimated turnover of Western Australian retail establishments during February 1995 was \$839.8 million (at current prices), a decrease of 7.8% over the previous month. The trend estimates however show an increase of 0.1% over the previous month.

From February 1994 to February 1995, trend estimates indicate a national annual growth rate of 6.8%. The annual growth rate for Western Australia for the same period was 4.5%.

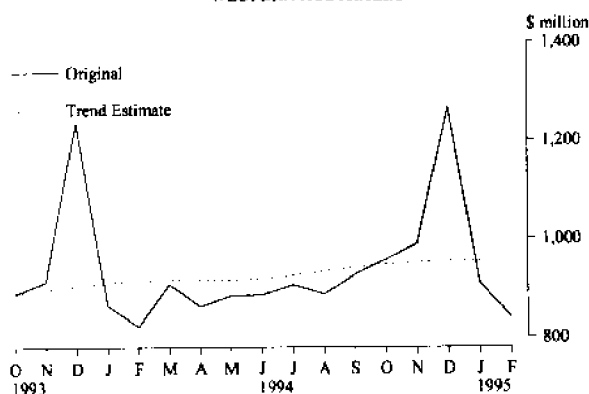
The national trend estimates show increases of 0.4%, 0.4% and 0.3% for the months of December 1994 and January and February 1995. For the same three months, Western Australia recorded increases of 0.3%, 0.2% and 0.1% respectively.

**TABLE 4.1 MONTHLY RETAIL TURNOVER : ORIGINAL ESTIMATES**  
Reference: Retail Trade, Australia (8501.0)  
(\$ million)

Months	Food	Department stores	Clothing and soft stores	Other Household goods	Recreational goods
Feb 94	356.2	69.0	48.0	104.9	47.6
Mar 94	397.7	81.1	51.1	107.5	44.5
Apr 94	367.2	86.2	55.6	103.0	40.3
May 94	371.6	95.1	61.7	110.0	41.4
Jun 94	370.9	92.1	62.1	113.9	43.6
Jul 94	391.6	77.0	58.4	105.6	47.1
Aug 94	386.6	80.0	56.9	98.8	46.1
Sep 94	393.2	86.5	61.0	102.2	45.3
Oct 94	394.8	95.2	61.9	103.3	51.1
Nov 94	405.9	100.6	67.3	112.0	53.7
Dec 94	481.9	176.7	87.7	143.3	77.1
Jan 95	398.9	76.3	55.8	106.4	48.9
Feb 95	381.2	68.5	48.6	93.2	41.0

Months	Other	Hospitality and services	TOTALS.....	Seasonally adjusted	Trend estimates
			Original		
Feb 94	63.5	133.0	822.2	925.8	915.6
Mar 94	67.2	159.1	908.2	937.7	917.1
Apr 94	69.7	141.6	863.6	886.0	917.0
May 94	70.4	134.0	884.2	921.0	917.2
Jun 94	71.8	132.5	886.9	919.6	920.4
Jul 94	76.0	150.9	906.6	931.0	926.2
Aug 94	75.4	143.2	887.0	932.1	934.1 r
Sep 94	84.0	155.2	927.4	935.2	942.1 r
Oct 94	81.4	169.1	956.8	955.3	947.9 r
Nov 94	83.4	166.7	989.6	964.6	951.8 r
Dec 94	113.4	186.1	1 266.2	936.1	954.6 r
Jan 95	68.0	156.6	910.9	972.5	956.1 r
Feb 95	63.1	144.2	839.8	945.0	956.8

**MONTHLY RETAIL TURNOVER**  
WESTERN AUSTRALIA



Source: Retail Trade, Australia (8501.0)

**Analysis of Table 4.2**

The Consumer Price Index (CPI) Perth All Groups December quarter 1994 increased by 0.8% over the preceding quarter. Major contributors to the increase were housing (up 3.7%); tobacco and alcohol (up 1.7%); recreation and education (up 1.6%); health and personal care (up 0.6%). The decrease in transportation (down 0.6%); clothing (down 0.5%); and food (down 0.2%); helped to keep the all groups increase to less than 1.0%.

The following sub-groups had a significant impact on the rise from the September quarter 1994 to the December quarter 1994: mortgage interest charges; local government rates and charges; cigarettes and tobacco; and domestic holiday travel and accommodation.

The increase in the CPI from December 1993 to December 1994 was 2.3%. Contributing most to the annual increase were housing (up 5.6%); tobacco and alcohol (up 5.3%); health and personal care (up 4.5%) and transportation (up 2.6%).

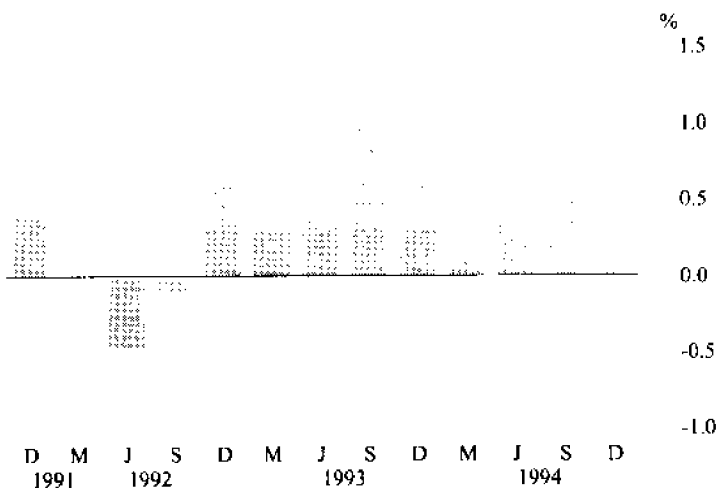
**TABLE 4.2 CONSUMER PRICE INDEX: PERTH**  
(Base of each index: Year 1989-90 = 100.0)

Reference: Consumer Price Index (6401.0)

Period	Food	Clothing	Housing	Household equipment and operation	Transportation
<b>Financial years</b>					
1991-92	107.0	107.4	94.0	107.5	109.1
1992-93	108.8	108.6	87.9	107.4	111.2
1993-94	110.0	108.2	87.3	108.2	114.4
<b>Quarters</b>					
Sep 93	109.8	108.3	87.7	108.6	113.6
Dec 93	110.3	107.8	86.9	108.1	114.2
Mar 94	110.2	108.2	86.9	108.1	113.9
Jun 94	109.9	108.5	87.8	107.9	116.0
Sep 94	111.6	107.9	88.5	108.3	117.9
Dec 94	111.4	107.4	91.8	109.0	117.2

Period	Tobacco and alcohol	Health and personal care	Recreation and education	All groups
<b>Financial years</b>				
1991-92	110.6	117.2	104.8	105.9
1992-93	114.0	119.8	106.7	106.2
1993-94	128.8	123.8	107.6	107.9
<b>Quarters</b>				
Sep 93	123.7	122.1	107.1	107.9
Dec 93	129.1	122.9	108.5	108.5
Mar 94	130.4	124.8	107.5	108.6
Jun 94	131.8	125.5	107.5	109.1
Sep 94	133.6	127.6	107.7	110.1
Dec 94	135.9	128.4	109.4	111.0

**CPI ALL GROUPS: PERTH**  
Percentage change from previous quarter



### Analysis of Table 5.1

The number of houses approved in February 1995 increased by 8.6% when compared with January 1995 and decreased by 21.6% when compared with February 1994. The number of total dwelling units approved in February 1995 increased by 3.3% when compared with January 1995 and decreased by 10.0% when compared with February 1994.

The Building Approvals trend series for houses peaked at 1,670 in April 1994 and since that time has steadily declined to a level of 1,345 in February 1995.

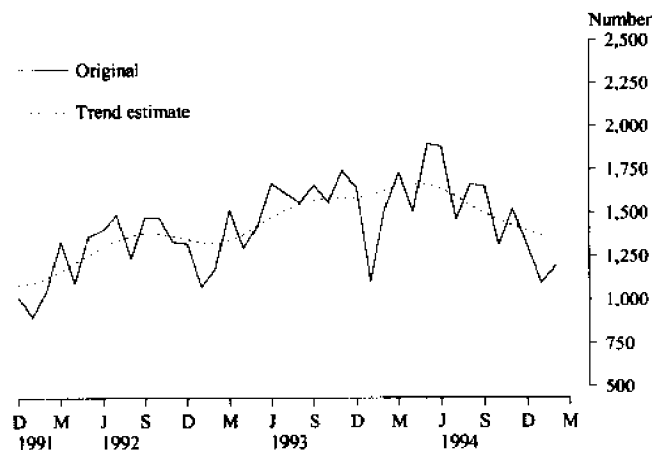
For more information about this table, call David Brown on (09) 360 5129

**TABLE 5.1 NEW RESIDENTIAL BUILDING APPROVED**  
Reference: Building Approvals, Western Australia (8731.5)

Period	HOUSES .....		OTHER RESIDENTIAL BUILDINGS.....		TOTAL (a).....	
	Number	Value (\$m)	No. of dwelling units	Value (\$m)	No. of dwelling units	Value (\$m)
<b>Financial years</b>						
1991-92	13 836	955.3	4 741	262.6	18 678	1 217.9
1992-93	16 485	1 173.7	5 994	345.7	22 568	1 519.4
1993-94	19 437	1 503.7	7 144	461.0	26 776	1 964.7
<b>Months</b>						
Dec 93	1 645	125.0	644	39.3	2 297	164.3
Jan 94	1 104	86.0	439	25.9	1 560	111.9
Feb 94	1 524	124.0	576	38.6	2 110	162.6
Mar 94	1 732	136.1	690	50.2	2 432	186.3
Apr 94	1 507	122.8	587	38.0	2 105	160.8
May 94	1 900	151.9	764	48.4	2 667	200.4
Jun 94	1 885	153.2	770	55.4	2 661	208.7
Jul 94	1 458	123.3	658	44.4	2 128	167.8
Aug 94	1 865	134.8	644	42.4	2 320	177.3
Sep 94	1 660	133.6	773	49.2	2 445	182.8
Oct 94	1 415	113.6	453	31.7	1 878	145.3
Nov 94	1 522	129.0	602	40.4	2 149	169.3
Dec 94	1 314	110.1	526	33.3	1 856	143.4
Jan 95	1 100	90.6	431	25.8	1 535	116.4
Feb 95	1 195	102.0	383	26.8	1 586	128.8

(a) Includes conversions

**NEW HOUSES APPROVED  
WESTERN AUSTRALIA**

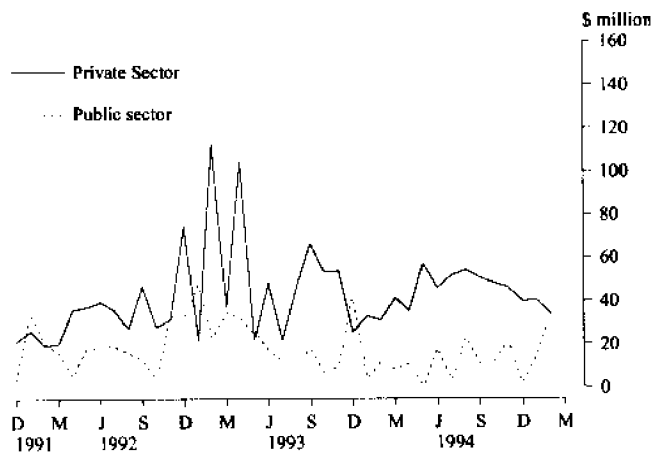


Source: Building Approvals, Western Australia (8731.5)

**TABLE 5.2 NEW NON-RESIDENTIAL BUILDING APPROVED**  
 Reference: Building Approvals, Western Australia (8731.5)

Period	Private	Public	Total
(\$ million)			
<b>Financial years</b>			
1991-92	306.6	198.3	504.9
1992-93	591.3	298.3	889.6
1993-94	513.1	153.9	667.0
<b>Months</b>			
Dec 93	25.8	41.4	67.2
Jan 94	33.1	4.3	37.4
Feb 94	31.2	11.5	42.7
Mar 94	41.5	8.2	49.7
Apr 94	35.5	11.1	46.6
May 94	57.4	1.3	58.7
Jun 94	46.0	17.7	63.7
Jul 94	51.5	3.5	55.0
Aug 94	54.2	22.9	77.1
Sep 94	50.9	11.0	61.9
Oct 94	48.3	11.9	60.2
Nov 94	46.4	21.6	68.0
Dec 94	39.9	2.1	42.0
Jan 95	40.5	14.4	54.8
Feb 95	34.2	34.2	68.3

**NEW NON-RESIDENTIAL BUILDING APPROVED  
 WESTERN AUSTRALIA**



Source: Building Approvals, Western Australia (8731.5)

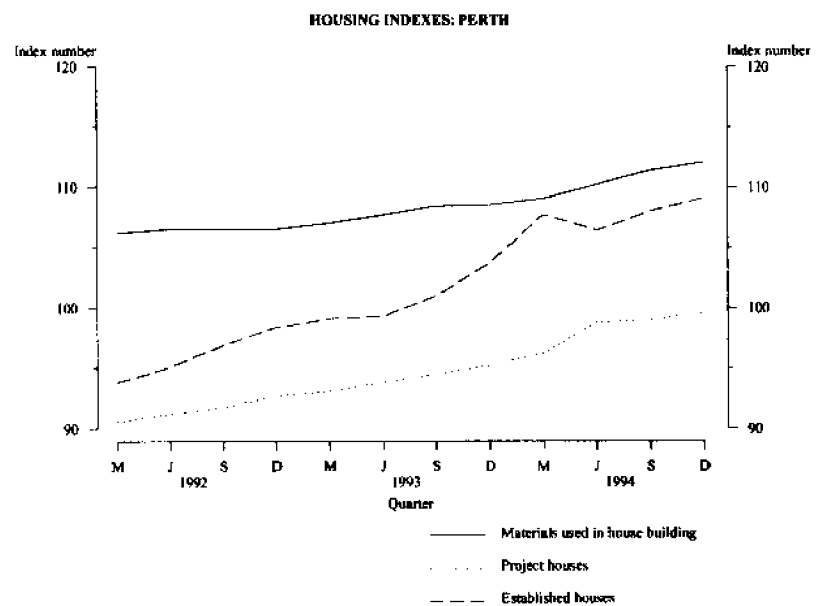
**TABLE 5.3 SELECTED HOUSING PRICE INDEXES: PERTH**

(Base of each index: 1989-90 = 100.0)

References: Price Index of Materials Used in House Building, Six State Capital Cities and Canberra (6408.0); House Price Indexes, Eight Capital Cities (6416.0)

Period	Materials used		
	in house building (a)	Project Homes	Established homes
<b>Financial years</b>			
1991-92	106.0	90.6	94.1
1992-93	106.9	92.8	98.4
1993-94	109.0	96.2	104.7
<b>Quarters</b>			
Sep 93	108.4	94.5	101.0
Dec 93	108.5	95.2	103.7
Mar 94	109.0	96.2	107.7
Jun 94	110.2	98.8	106.4
Sep 94	111.4	99.0	108.0
Dec 94	112.1	99.6	109.1

(a) Materials Used in House Building Index has been converted to a 1989/90 base for comparability purposes of this table.



**TABLE 5.4 PRICE INDEX OF MATERIALS USED IN BUILDING OTHER THAN HOUSE BUILDING: PERTH**

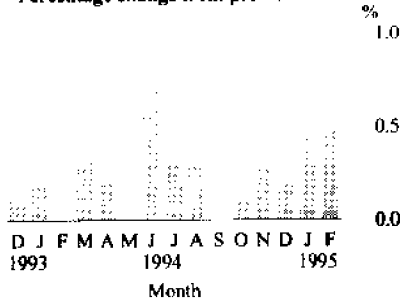
(Base of each index 1989-90 = 100)

Reference: Price Index of Materials Used in Building Other Than House Building (6407.0)

Period	SPECIAL COMBINATIONS OF BUILDING MATERIALS .....			
	All groups	Electrical materials	Mechanical services	Plumbing materials
<b>Financial years</b>				
1991-92	105.2	105.0	104.7	103.0
1992-93	105.7	105.7	103.7	103.7
1993-94	107.1	101.9	104.2	105.1
<b>Months</b>				
Dec 93	106.8	100.3	104.2	104.8
Jan 94	107.0	100.4	104.3	105.1
Feb 94	107.0	100.4	104.0	105.3
Mar 94	107.4	100.9	104.3	105.3
Apr 94	107.6	101.0	104.3	105.7
May 94	107.6	101.0	104.1	105.8
Jun 94	108.3	102.2	104.4	107.7
Jul 94	108.6	103.6	104.8	109.3
Aug 94	108.9	103.7	104.9	110.9
Sep 94	108.9	103.6	105.3	111.2
Oct 94	109.0	103.7	105.5	113.3
Nov 94 p	109.3	105.2	105.7	116.1
Dec 94 p	109.5	107.7	105.8	115.0
Jan 95 p	110.0	109.1	106.1	115.2
Feb 95 p	110.5	109.4	107.3	115.3

PRICE INDEX OF MATERIALS USED IN BUILDING OTHER THAN HOUSE BUILDING ALL GROUPS: PERTH

Percentage change from previous month



SELECTED MAJOR BUILDING MATERIALS .....

Period	Structural timber	Clay bricks	Ready mixed concrete	Structural steel	Aluminium windows
	<b>Financial years</b>				
1991-92	99.4	110.2	116.0	96.0	103.0
1992-93	102.7	111.3	115.5	96.3	103.8
1993-94	110.6	113.9	116.6	100.4	104.4
<b>Months</b>					
Dec 93	109.9	113.6	116.3	99.6	104.2
Jan 94	109.9	113.6	116.3	99.6	104.2
Feb 94	110.1	113.6	116.1	99.6	104.2
Mar 94	112.1	113.6	116.1	102.3	104.2
Apr 94	112.1	113.6	115.8	102.3	104.2
May 94	111.6	115.0	115.8	103.1	104.2
Jun 94	111.7	114.9	118.7	103.2	108.1
Jul 94	111.7	114.9	119.6	103.2	108.1
Aug 94	111.7	117.8	119.3	103.4	108.1
Sep 94	111.7	117.8	119.3	103.4	108.1
Oct 94	111.7	117.8	118.3	103.4	108.8
Nov 94 p	111.8	117.8	117.8	103.4	109.4
Dec 94 p	109.7	117.8	117.3	103.4	109.4
Jan 95 p	109.8	117.8	117.3	103.7	112.3
Feb 95 p	109.7	117.8	117.2	103.7	112.3

TABLE 6.1 LIVESTOCK SLAUGHTERED

Reference: Livestock Products (7215.0)

('000)

CATTLE .....							
Period	Bulls, bullocks, steers	Cows, heifers	Total	Calves	Sheep	Lambs	Pigs
<b>Financial years</b>							
1991-92	246	178	424	7	3 017	1 238	526
1992-93	272	180	452	5	3 752	1 481	568
1993-94	271	168	439	4	2 952	1 553	550
<b>Months</b>							
Nov 93	27	13	40	-	333	131	46
Dec 93	28	15	43	-	292	85	49
Jan 94	19	14	33	-	200	70	40
Feb 94	20	18	38	-	253	96	43
Mar 94	20	17	37	-	273	138	50
Apr 94	16	10	26	-	235	138	40
May 94	18	13	31	-	232	146	51
Jun 94	20	11	31	1	152	79	52
Jul 94	16	12	28	-	171	59	49
Aug 94	20	14	34	-	165	90	50
Sep 94	21	17	38	-	199	168	47
Oct 94	23	15	38	-	214	163	48
Nov 94	25	16	41	-	196	83	53
Dec 94	26	20	46	-	231	122	49
Jan 95	20	17	37	-	220	91	43



**TABLE 6.2 MEAT PRODUCED**  
**Reference: Livestock Products (7215.0)**  
**tonnes**

<i>Period</i>	<i>Beef</i>	<i>Veal</i>	<i>Mutton</i>	<i>Lamb</i>	<i>Pigmeat</i>
<b>Financial years</b>					
1991-92	91 327	478	60 610	19 360	30 967
1992-93	100 196	303	76 921	23 395	33 562
1993-94	101 513	296	61 731	24 936	32 423
<b>Months</b>					
Nov 93	9 382	33	7 135	2 205	2 707
Dec 93	9 984	21	5 990	1 438	2 741
Jan 94	8 684	30	4 101	1 128	2 168
Feb 94	9 003	17	5 596	1 645	2 576
Mar 94	8 663	18	5 538	1 939	2 949
Apr 94	6 307	13	4 765	2 321	2 415
May 94	6 941	21	4 661	2 422	3 017
Jun 94	6 670	35	3 574	1 223	3 097
Jul 94	6 112	26	3 282	933	2 896
Aug 94	7 592	31	3 260	1 408	2 956
Sep 94	8 459	31	4 029	2 589	2 846
Oct 94	8 764	22	4 042	2 499	2 882
Nov 94	9 348	33	7 135	1 220	2 990
Dec 94	10 569	26	4 777	1 866	2 741
Jan 95	8 421	33	4 344	1 437	2 500

TABLE 6.3 WOOL RECEIVAL(a) and LIVE SHEEP EXPORTS

Reference: FTRACCS Trade Statistics

Period	Receipts of taxable wool by brokers and dealers .....		EXPORT OF LIVE SHEEP .....		
	bales	tonnes	Number	Gross Value	Unit Value
			'000	\$'000	\$
<b>Financial years</b>					
1991-92	1 022 610	182 026	4 395.6	87 717	19.96
1992-93	1 115 307	198 756	5 097.1	121 934	23.92
1993-94 p	1 196 990	212 670	5 430.3	148 926	27.43
<b>Months</b>					
Oct 93	178 040	31 792	392.9	10 364	26.38
Nov 93	145 254	25 682	322.6	8 937	27.70
Dec 93	51 293	9 065	436.2	13 960	32.00
Jan 94	61 663	10 824	240.2	7 468	31.09
Feb 94	106 046	19 055	569.8	16 573	29.09
Mar 94	115 819	20 643	352.0	9 436	26.81
Apr 94	63 444	11 396	515.3	14 665	28.46
May 94	43 471	7 657	212.6	6 527	30.70
Jun 94	28 220	4 950	468.2	13 272	28.35
Jul 94	67 039	11 963	368.5	11 862	32.19
Aug 94	138 948	24 758	218.7	7 186	32.86
Sep 94	164 715	29 327	235.3	7 649	32.51
Oct 94	126 445	22 185	310.9	9 106	29.29
Nov 94	87 127	12 097	347.7	9 578	27.55
Dec 94 p	31 807	5 522	270.8	8 133	30.03

(a) Source: National Council of Wool Selling Brokers

## Analysis of Table 6.4

When compared with the previous year, coal production in 1993-94 fell by 5.4% to 5,151,000 tonnes. All of this shortfall occurred in the last quarter of the year and was caused by the undertaking of a major economic rationalisation process by coal producers. A general move away from underground mining was the major consequence of this rationalisation.

For more information about this table, contact Diane Braskic on (09) 360 5932

TABLE 6.4 ENERGY PRODUCTION

Period	Coal (a)	Electricity generated	Gas for distribution (b)	Crude oil (c) (d)	Natural gas (d)
	'000 tonnes	million kWh	million MJ	mega-litres	million m <sup>3</sup>
<b>Financial years</b>					
1991-92	5 491	14 626	149 534	7 350	10 496
1992-93	5 428	15 007	156 349	6 693	11 923
1993-94	5 151	15 755	172 432	7 639 r	13 659 r
<b>Months</b>					
Nov 93	446	1 262	14 224		
Dec 93	394	1 342	15 324	1 440	3 215
Jan 94	393	1 364	13 918		
Feb 94	360	1 277	13 789		
Mar 94	486	1 413	15 483	2 061	3 790
Apr 94	384	1 282	15 265		
May 94	403	1 331	14 351		
Jun 94	316	1 334	15 501	2 405	3 502
Jul 94	335	1 356	16 062		
Aug 94	399	1 376	16 818		
Sep 94	485	1 302	16 286	3 117	4 086
Oct 94	467	1 317	17 189		
Nov 94	508	1 369	15 936		
Dec 94	517	1 447	9 462	3 275	3 898
Jan 95	n.y.a.	1 486	11 057	n.y.a.	n.y.a.

(a) Source: Department of Mines. (b) Available for issue through mains. (c) Includes condensate. (d) Source: Australian Bureau of Agricultural and Resource Economics.

TABLE 6.5 PRODUCTION OF SELECTED COMMODITIES

Reference: Manufacturing Production - Australia (8359.0) (8361.0) (8362.0)

<i>Period</i>	<i>Bacon and ham</i>	<i>Cheese (a)</i>	<i>Rock lobster tails</i>	<i>Whole milk intake by factories (a)</i>	<i>Market milk sales by factories (a)</i>
	tonnes	tonnes	tonnes	litres	litres
<b>Financial years</b>					
1991-92	9 974	5 380	1 515	302	175
1992-93	10 574	5 804	1 686	324	177
1993-94	10 950	5 170	688	346	181
<b>Months</b>					
Nov 93	1 167	577	14	29	15
Dec 93	1 345	343	128	26	15
Jan 94	726	203	58	27	15
Feb 94	792	118	109	26	13
Mar 94	906	195	99	29	17
Apr 94	787	372	143	26	15
May 94	825	367	100	29	16
Jun 94	848	375	37	27	15
Jul 94	911	n.y.a.	-	30	15
Aug 94	n.p.	n.y.a.	-	33	16
Sep 94	763	n.y.a.	-	33	16
Oct 94	864	n.y.a.	-	33	15
Nov 94	n.y.a.	n.y.a.	n.y.a.	33	15
Dec 94	n.y.a.	n.y.a.	n.y.a.	26	15
Jan 95	n.y.a.	n.y.a.	n.y.a.	26	15

<i>Period</i>	<i>Aerated and carbonated waters</i>	<i>Prepared stock and poultry food</i>	<i>Paints</i>	<i>Ready mixed concrete</i>	<i>Terracotta and concrete roof tiles</i>
	'000 litres	tonnes	'000 litres	'000 m <sup>3</sup>	'000 m <sup>2</sup>
<b>Financial years</b>					
1991-92	147 249	306 851	8 055	1 000	2 977
1992-93	148 253	329 108	7 312	1 234	3 669
1993-94	163 141	345 698	n.y.a.	n.y.a.	n.y.a.
<b>Months</b>					
Nov 93	17 406	27 905	640	121	401
Dec 93	20 884	28 731	696	106	326
Jan 94	10 502	25 808	495	90	285
Feb 94	13 976	27 420	564	111	351
Mar 94	20 934	34 520	628	122	400
Apr 94	9 294	28 285	673	100	352
May 94	10 006	27 635	622	115	402
Jun 94	12 079	30 061	518	100	370
Jul 94	10 326	28 815	692	118	386
Aug 94	9 738	28 953	640	124	400
Sep 94	13 646	32 433	725	125	394
Oct 94	13 603	28 615	702	113	358
Nov 94	n.y.a.	n.y.a.	691	122	412
Dec 94	n.y.a.	n.y.a.	816	99	326
Jan 95	n.y.a.	n.y.a.	n.y.a.	95	363

(a) Source: Australian Dairy Corporation.

**TABLE 6.6 MINERAL EXPLORATION:  
EXPENDITURE BY TYPE OF MINERAL SOUGHT**

Reference: Actual and Expected Private Mineral Exploration Expenditure,  
Australia (8412.0)

(\$ million)

Period	METALLIC MINERALS .....			NON-METALLIC MINERALS		Total minerals
	Base metals (a)	Gold	Other	Diamonds	Other	
<b>Financial years</b>						
1991-92	43.9	208.5	51.7	25.1	2.8	331.9
1992-93	60.0	221.2	35.0	29.0	2.9	348.1
1993-94	63.3	310.2	31.5	46.6	2.1	453.7
<b>Quarters</b>						
Jun 93	17.6	61.4	6.7	8.8	1.1	95.8
Sep 93	18.0	70.1	8.7	12.4	0.5	109.6
Dec 93	17.4	73.5	12.9	14.6	0.6	119.0
Mar 94	12.1	76.4	5.0	7.1	0.4	100.9
Jun 94	15.9	90.2	4.2	12.6	0.6	123.4

(a) Includes copper, lead, zinc, silver, nickel and cobalt.

#### Analysis of Table 6.7

During the June Quarter, the value of Gold production rose by 5.5% and that of Iron Ore by 15.2% when compared with the March Quarter. Notable production increases in 1993-94 were Gold by 7.9% to 193.8 tonnes, nickel 13.1% to 61,000 tonnes and Iron ore by 7.1% to 119.7 million tonnes.

For more information about this table, contact Yvonne Masgai on (09) 360 5932

**TABLE 6.7 MINERAL PRODUCTION**

Period	Iron ore	Bauxite	Gold	Ilmenite	Nickel	Diamonds
	'000 tonnes	'000 tonnes	kg	'000 tonnes	'000 tonnes	'000 carats
<b>Financial years</b>						
1991-92	111 643	25 290	182 043	1 445	52	41 424
1992-93	111 795	26 681	179 632	1 706	61	42 199
1993-94	119 689	27 088	193 800	1 583	69	39 903
<b>Quarters</b>						
Sep 93	32 087	6 967	47 300	386	19	12 612
Dec 93	29 079	6 499	48 900	368	17	7 657
Mar 94	27 199	6 903	47 500	369	16	11 355
Jun 94	31 324	6 719	50 100	460	17	8 279
Sep 94	32 781	6 038	47 700	410	19	12 864
Dec 94	32 958	6 644	48 800	405	24	11 292

Source: Australian Bureau of Agricultural and Resource Economics

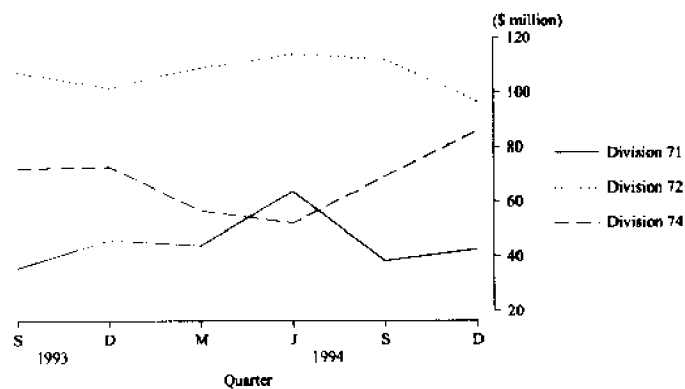
**TABLE 7.1 IMPORTS BY SELECTED DIVISION**

Reference: FTRACCS Trade Statistics

(\$ million)

Period	33	71	72	74	78
	Petroleum, petroleum products, etc.	Power generating equipment and machinery	Machinery specialised for particular industries	General industrial machinery and equipment	Road vehicles
<b>Financial years</b>					
1991-92	656.2	126.7	186.7	204.4	409.1
1992-93	912.0	172.0	650.2	215.2	538.3
1993-94	678.5	189.7	432.3	253.9	690.0
<b>Quarters</b>					
Sep 93	202.0	35.7	107.4	72.3	155.8
Dec 93	180.9	46.1	101.8	72.9	186.8
Mar 94	144.3	44.1	109.2	56.6	164.2
Jun 94	151.0	63.8	113.8	52.2	183.1
Sep 94	207.9	38.4	111.6 r	70.1 r	168.8
Dec 94	175.8	42.7	98.7	85.9	223.5

**IMPORTS BY SELECTED DIVISIONS**

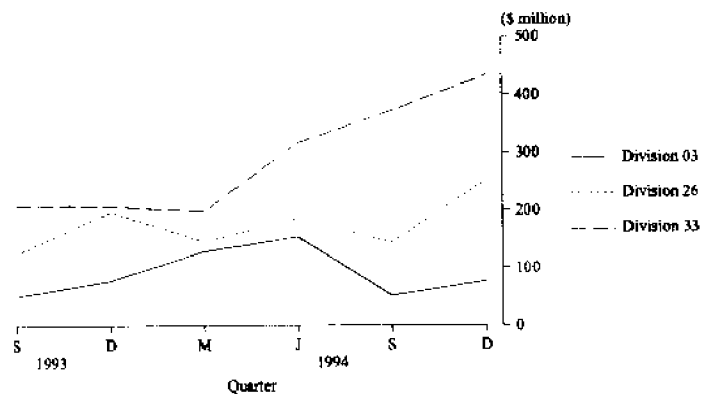


Source: FTRACCS Trade Statistics

**TABLE 7.2 EXPORTS BY SELECTED DIVISIONS**  
 Reference: FTRACCS Trade Statistics  
 (\$ million)

Period	03 Fish, crustac- eans, molluscs, etc	04 Cereals and cereal preparations	26 Textile fibres and waste (excluding yam or fabric fabric)	28 Metallif- erous ores and metal scrap	33 Petroleum, products etc.
<b>Financial years</b>					
1991-92	343.8	975.6	662.5	3 215.9	875.8
1992-93	359.0	1 294.9	611.4	3 261.2	967.0
1993-94	413.3	1 156.6	656.3	2 999.8	930.0
<b>Quarters</b>					
Sep 93	51.7	207.9	125.5	838.8	208.5
Dec 93	78.2	296.7	198.0	770.3	207.0
Mar 94	128.7	391.2	146.1	673.3	197.8
Jun 94	154.7	264.0	187.1	717.0	317.0
Sep 94	51.9	255.5	144.5	723.2	372.3
Dec 94	77.1	292.0	252.4	727.8	434.0

**EXPORTS BY SELECTED DIVISIONS**



Source: FTRACCS Trade Statistics

**TABLE 8.1 VEHICLE REGISTRATION STATISTICS**

Reference: Motor Vehicle Registrations, Western Australia

WESTERN AUSTRALIA						
Period	Passenger vehicles	Light commercial vehicles	Trucks and buses	Motor cycles and scooters	Total	Perth Statistical Division
<b>Financial years</b>						
1991-92	41 979	7 664	1 909	1 814	53 366	41 926
1992-93	45 567	9 581	1 975	2 117	59 240	46 593
1993-94	48 589	10 350	2 136	2 103	63 178	49 074
<b>Months</b>						
Jan 94	3 326	631	137	172	4 266	3 243
Feb 94	4 054	752	210	237	5 253	4 117
Mar 94	4 475	1 043	185	184	5 887	4 492
Apr 94	3 322	774	154	177	4 427	3 345
May 94	4 199	967	162	149	5 477	4 216
Jun 94	4 520	1 542	270	122	6 454	4 863
Jul 94	4 004	715	164	102	4 985	3 919
Aug 94	4 350	759	161	229	5 499	4 346
Sep 94	4 317	773	155	191	5 436	4 364
Oct 94	4 379	795	184	223	5 581	4 415
Nov 94	4 659	1 071	199	257	6 186	4 763
Dec 94	4 353	835	191	260	5 639	4 469
Jan 95	4 047	803	166	207	5 223	3 950
Feb 95	3 933	906	171	176	5 189	3 989

**Analysis of Table 8.2**

New motor vehicle registrations for February 1995 totalled 5,010, comparable with January 1995.

For more information about this table, contact Cheryl Smith on (09) 360 5242

**TABLE 8.2 NEW MOTOR VEHICLE REGISTRATIONS (a)**

Reference: Motor Vehicle Registrations, Western Australia (9303.5)

Period	PASSENGER VEHICLES		OTHER VEHICLES		TOTAL	
	Original	Trend estimate	Original	Trend estimate	Original	Trend estimate
<b>Months</b>						
Jan 94	3 326	4 006	768	1 017	4 094	5 023
Feb 94	4 054	4 037	962	1 019	5 016	5 056
Mar 94	4 475	4 071	1 228	1 017	5 703	5 088
Apr 94	3 322	4 082	928	1 015	4 250	5 097
May 94	4 199	4 098	1 129	1 008	5 328	5 106
Jun 94	4 520	4 135	1 812	1 002	6 332	5 137
Jul 94	4 004	4 176	879	995	4 883	5 171
Aug 94	4 350	4 224 r	920	997	5 270	5 221 r
Sep 94	4 317	4 272 r	928	1 012 r	5 245	5 284 r
Oct 94	4 379	4 309 r	979	1 039	5 358	5 348 r
Nov 94	4 659	4 342 r	1 270	1 071	5 929	5 413 r
Dec 94	4 353	4 459 r	1 026	1 101 r	5 379	5 460 r
Jan 95	4 047	4 360 r	969	1 126 r	5 016	5 486 r
Feb 95	3 933	4 352	1 077	1 144	5 010	5 496

(a) Other vehicles excludes motor cycles.

TABLE 9.1 PRIVATE NEW CAPITAL EXPENDITURE BY SELECTED  
INDUSTRY GROUPS (ORIGINAL SERIES)

Reference: State Estimates of Private New Capital Expenditure (5646.0)  
(\$ million)

Period	SELECTED INDUSTRY			TOTAL	Seasonally adjusted
	Mining	Manu- facturing	Other selected industries	Original	
<b>Financial Years</b>					
1992-93	2 962	669	1 649	5 280	5 300
1993-94	3 619	529	1 823	5 972	5 957
<b>Quarters</b>					
Mar 93	707	151	570	1 428	1 468
Jun 93	834	126	376	1 336	1 426
Sep 93	867	123	372	1 363	1 354
Dec 93	1 106	169	511	1 786	1 621
Mar 94	748	106	360	1 213	1 265
Jun 94	897	131	581	1 609	1 717
Sep 94	766	122	421	1 309	1 303
Dec 94	1 118	156	918	2 192	2 020



**Analysis of Table 9.2**

GSP grew steadily in the December quarter, rising 1.5% to be 8.0% higher than at the same time in 1993. Wages, salaries and supplements rose 1% to match the corresponding Australian rate, and grew 3.8% over the year to December quarter. Strong growth in the last four quarters contributed to a 16.1% increase in indirect taxes less subsidies over the year to December quarter.

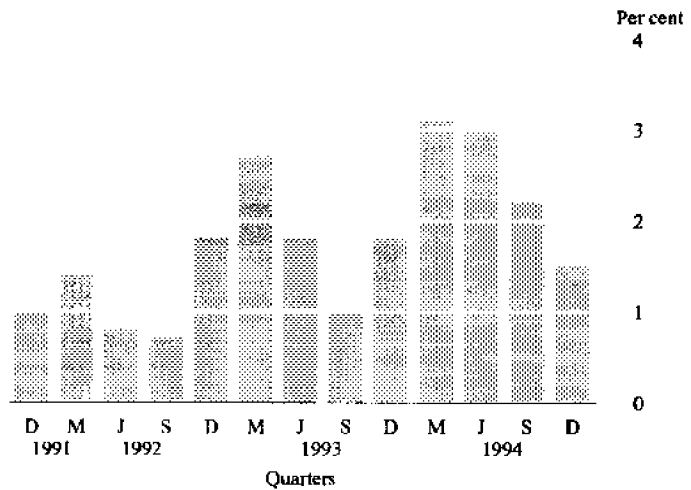
*For more information about this table, call Toni Beckwith (09) 360 5147*

**TABLE 9.2 STATE FINAL DEMAND AND PRODUCTION ACCOUNT TREND DATA AT CURRENT PRICES**

Reference: State Accounts (5242.0)  
(\$ million)

Period	Wages salaries and supplements	Gross operating surplus	GSP at factor cost	GSP (income based)
<b>Quarters</b>				
Jun 92	4 588	4 501	9 089	10 154
Sep 92	4 594	4 612	9 206	10 275
Dec 92	4 626	4 747	9 373	10 441
Mar 93	4 723	4 851	9 574	10 656
Jun 93	4 873	4 854	9 727	10 844
Sep 93	5 016	4 847	9 863	11 016
Dec 93	5 118	4 880	9 998	11 204
Mar 94	5 173	4 999	10 172	11 444
Jun 94	5 213	5 163	10 376	11 703
Sep 94	5 260	5 291	10 551	11 921
Dec 94	5 313	5 389	10 702	12 102

**PERCENTAGE CHANGE IN GSP(A) - TREND WESTERN AUSTRALIA**



(A) Gross State Product at current prices  
Source: State Accounts 5242.0

## STATISTICAL SUMMARY

<i>Indicator</i>	<i>Unit</i>	<i>Period</i>	<i>Current Australian figure</i>	<i>Current W.A. figure</i>	<i>Change from last period (per cent)</i>	<i>Figure one year ago</i>	<i>One year ago (per cent)</i>
<b>POPULATION</b>							
Estimated resident population	'000	Jun qtr 94	17843.3	1 701.9	0.4	1 676.3	1.5
Natural increase	No.	Jun qtr 94	35358.0	3 940	-1.1	3 778	4.3
Net estimated migration gain	No.	Jun qtr 94	5 576	2 321	-46.9	394	589.1
<b>TOURISM</b>							
<b>Hotels and motels, etc with facilities</b>							
Guest arrivals	'000	Dec qtr 94	n.y.a.	579.3	-2.3	563.8	2.8
Guest rooms available	No.	Dec qtr 94	n.y.a.	14 734	0.0	14 694	0.3
Room occupancy rates	per cent	Dec qtr 94	n.y.a.	61.2	-1.3	57.4	6.6
<b>Overseas visitors</b>							
Long-term arrivals	No.	Sep qtr 94	16 560	2 080	80.9	850	24.6
Short-term arrivals	No.	Sep qtr 94	800 400	73 600	11.9	55 600	25.0
Departures	No.	Sep qtr 94	783 760	72 480	-6.8	62 880	39.9
<b>EMPLOYMENT</b>							
Employed persons (Trend)	'000	Mar 95	8146.1	823.0	0.4	784.1	5.0
Unemployed persons looking for work (Trend)	'000	Mar 95	784.5	66.8	-0.2	74.0	-9.7
Job vacancies	'000	Feb 95	57.2	4.8	26.1	*4.7	2.1
<b>Participation rate</b>							
Original	per cent	Mar 95	63.8	67.0	0.3	65.7	2.0
Trend	per cent	Mar 95	63.5	66.7	0.2	65.6	1.7
<b>Unemployment rate</b>							
Original	per cent	Mar 95	9.1	7.8	-12.4	8.9	-12.4
Trend	per cent	Mar 95	8.8	7.5	0.0	8.6	-12.8
<b>Full-time average weekly earnings</b>							
Males	\$	Aug 94	713.00	737.3	2.8	698.00	5.6
Females	\$	Aug 94	566.70	530.5	-1.6	506.10	4.8
Persons	\$	Aug 94	661.30	660.4	1.4	628.90	5.0
All employees total earnings	\$	Aug 94	536.20	507.2	-0.1	502.40	1.0
<b>Average weekly overtime hours</b>							
Per employee	hours	Aug 94	1.28	1.41	-4.6	1.17	21.4
Per employee working overtime	hours	Aug 94	7.11	8.10	-2.5	6.94	16.8
Employees working overtime	per cent	Aug 94	17.96	17.45	-2.2	16.80	3.9
<b>Industrial disputes in progress (working days lost)</b>							
Total	'000	Dec 94	49.0	4.4	340.0	0.1	4300.0
Per '000 employees (twelve months ended)	days	Dec 94	86	51.0	18.6	51	0
<b>RETAIL</b>							
Original	\$m	Nov 94	9550.1	989.8	3.4	913.5	8.4
Trend estimate	\$m	Nov 94	9288.0	956.5	0.6	897.1	6.6

p preliminary

\* Subject to sampling variability

STATISTICAL SUMMARY continued

<i>Indicator</i>	<i>Unit</i>	<i>Period</i>	<i>Current Australian figure</i>	<i>Current W.A. figure</i>	<i>Change from last period (per cent)</i>	<i>Figure one year ago</i>	<i>One year ago (per cent)</i>
<b>CONSTRUCTION</b>							
<b>Building Approvals</b>							
Dwelling Units	No.	Nov 94	15 909	2 124	13.7	2 359	-10.0
Value of all building	\$	Nov 94	2403.0	253.6	15.2	245.7	3.2
<b>Building Commencements</b>							
Dwelling Units	No.	Sep qtr 94	49 140	6 836	1.3	6 214	10.0
Value of all building	\$	Sep qtr 94	7035.4	789.7	8.0	677.6	16.5
<b>Total Building</b>							
Value of work done during period	\$m	Sep qtr 94	7165.5	779.3	3.8	675.9	15.3
Value of work yet to be done	\$m	Sep qtr 94	9020.9	772.5	5.1	705.1	9.6
<b>Established house price index (1989-90 = 100) Perth</b>							
	index no.	Sep qtr 94	112.6	106.4	1.5	101.0	6.9
<b>Engineering Construction</b>							
Value of work commenced	\$m	Sep qtr 94	4170.7	359.9	-47.5	353.1	1.8
Value of work done during period	\$m	Sep qtr 94	2949.6	330.2	-29.8	426.2	-22.5
Value of work yet to be done	\$m	Sep qtr 94	5080.3	718.9	-8.6	545.8	31.7
<b>MINERAL EXPLORATION</b>							
Gold	\$m	Jun 94	133.4	90.2	18.1	61.4	46.9
Other minerals	\$m	Jun 94	87.2	33.2	0.0	34.4	-3.5
<b>OVERSEAS TRADE</b>							
Imports	\$m	Feb 95	5569.4	4391.0	-43.6	301.1	45.8
Exports	\$m	Feb 95	4862.6	1279.2	1.8	1236.4	3.5
<b>TRANSPORT</b>							
<b>Passenger vehicles registrations</b>							
Original	No.	Jan 95	36 289	4 047	-7.0	3 326	21.7
Trend	No.	Jan 95	44 763	4 465	3.8	4 006	11.5
<b>Total registrations</b>							
Original	No.	Jan 95	42 947	5 016	-6.7	4 094	22.5
Trend	No.	Jan 95	53 946	5 601	4.3	5 023	11.5
<b>FINANCE</b>							
<b>Private New Capital Expenditure</b>							
Original	\$m	Dec qtr 94	9 317	2 192	67.5	1 786	22.7
Seasonally adjusted	\$m	Dec qtr 94	8 589	2 020	55.0	1 621	24.6
<b>Gross State Product (Income based)</b>							
Current prices	\$m	Dec qtr 94	119 316	13 441	12.8	12 315	9.1
<b>State Final Demand</b>							
At average 1989-90 prices	\$m	Dec qtr 94	106 053	10 918	9.6	10 275	6.3

p preliminary



## FOR MORE INFORMATION . . .

The ABS publishes a wide range of information on Australia's economic and social conditions. A catalogue of publications and products is available from any of our Offices (see below for contact details).

### Information Consultancy

Special tables or in-depth data investigations are provided by the ABS Information Consultancy in each of our Offices (see below for contact details).

### Electronic Data Services

A growing range of our data is available on electronic media. The ABS intends discontinuing its statistical information service on DISCOVERY. Please contact Peter Davidson (Phone 06 252 6684) to discuss possible alternatives for acquiring statistics or if you wish to comment on this proposal. Our Telestats service delivers major economic publications ready to download into your computer on the day of release. Our Ausstats service enables on-line access to a data base of thousands of up-to-date time series. Selected datasets are also available on diskette or CD-rom. For more details on our electronic services, contact Information Services in any of our Offices on the numbers below.

### Bookshops and Subscriptions

There are over 500 titles available from the ABS Bookshops in each of our Offices. You can also receive any of our publications on a regular basis. Join our subscription mailing service and have your publications mailed to you in Australia at no additional cost.

### General Sales and Inquiries

- Sydney 02 268 4611
  - Melbourne 03 615 7000
  - Brisbane 07 222 6351
  - Perth 09 360 5140
  - Adelaide 08 237 7100
  - Hobart 002 20 5800
  - Darwin 089 43 2111
  - Canberra 06 252 6007
- Information Services, ABS  
Level 16,  
Exchange Plaza Building  
2 The Esplanade,  
Perth WA 6000



2130550004956  
ISSN 0727-2367

095

e: \$12.00